

**22772
& 22792**

**CENTRE DRIVE
LAKE FOREST, CA 92630**

LAKE FOREST OFFICE BUILDING

Walking Distance to
Resaurants and Shopping



Matt Wickstrom

M: 858-353-6600

P: 949-597-0200

E: matt@tappancorp.com

Tappan Corporation

22792 Centre Drive

Suite 250

Lake Forest, CA 92630

www.TappanCorp.com

FOR LEASE

OFFICE SPACE WITH FLEXIBLE CONFIGURATIONS

CENTRE DRIVE

Lake Forest, CA 92630

The Building

- ±50,777 SF Class B office building
- 4/1,000 SF parking ratio
- Extensive suite renovations now underway
- Internet providers: Spectrum-Time Warner, AT&T Fiber
- Shower available for Tenant use
- Bright and spacious window lines with beautiful mountain views
- On-site management

Access

- Excellent freeway access at Rancho Bernardo Drive and Interstate 15
- Walking distance to amenities and next door to brand new Sharp Rees Stealy medical building

Rental Rate - Suites

- Suite 140: \$1,180.00 per month-full service

Rental Rate - Single Offices

- Suite 117: \$650.00 per month-full service (internet included)



Matt Wickstrom
M: 858-353-6600
P: 949-597-0200

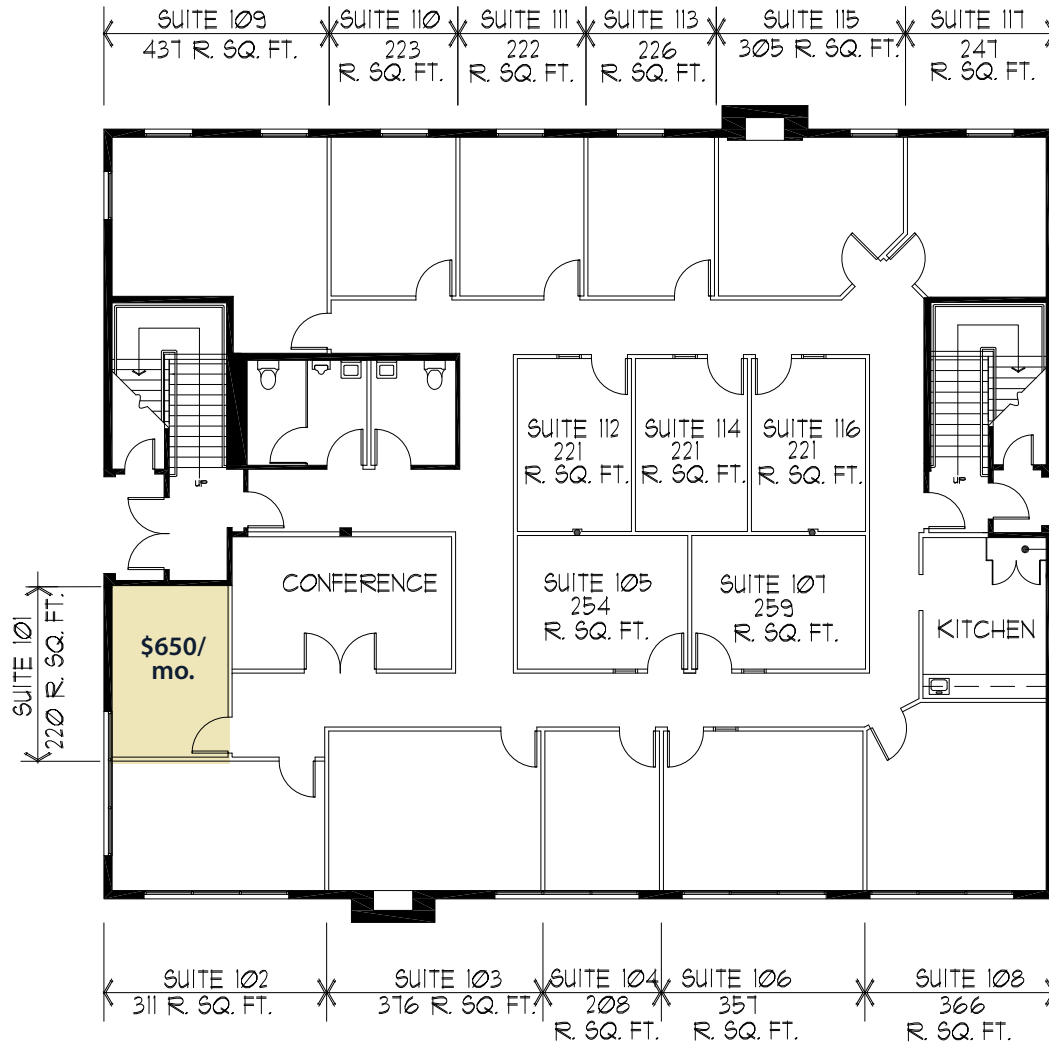
E: matt@tappancorp.com

www.TappanCorp.com

FOR LEASE | GROUND FLOOR - SUITES

22792 CENTRE DRIVE

Lake Forest, CA 92630



Matt Wickstrom
M: 858-353-6600
P: 949-597-0200

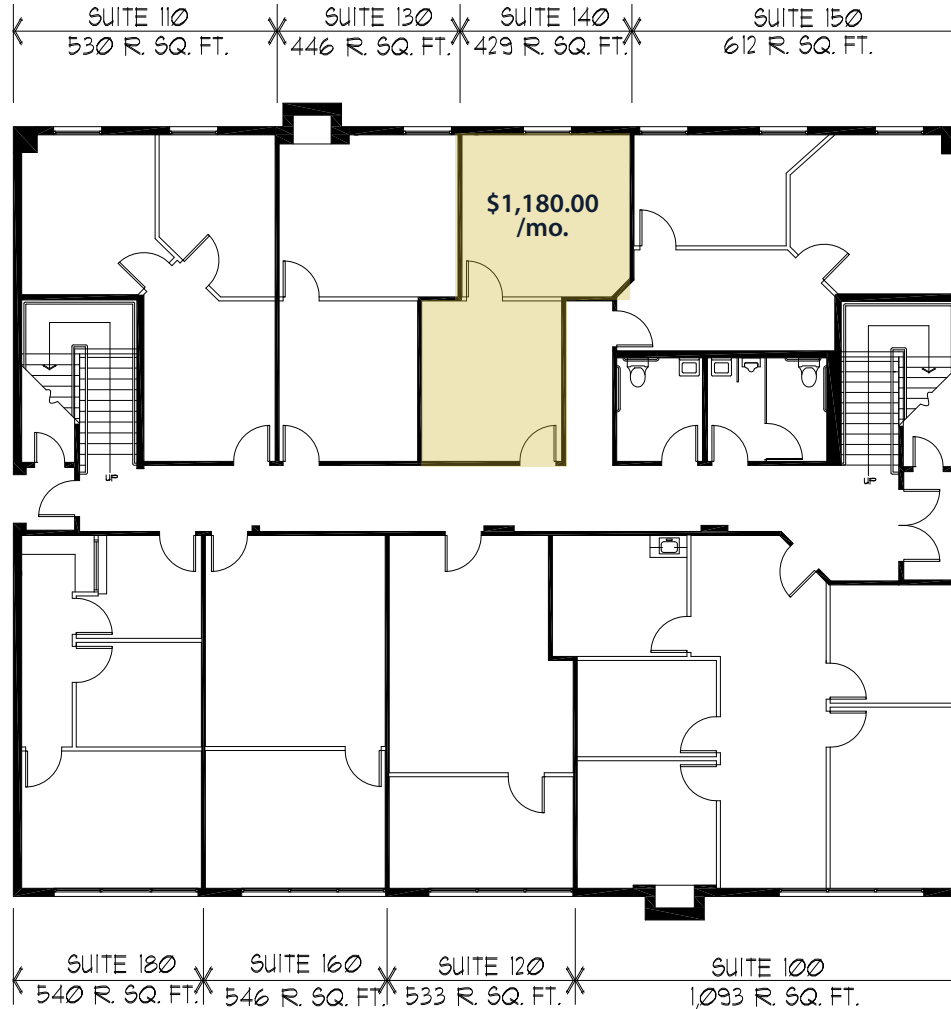
E: matt@tappancorp.com

www.TappanCorp.com

FOR LEASE | GROUND FLOOR - SUITES

22772 CENTRE DRIVE

Lake Forest, CA 92630



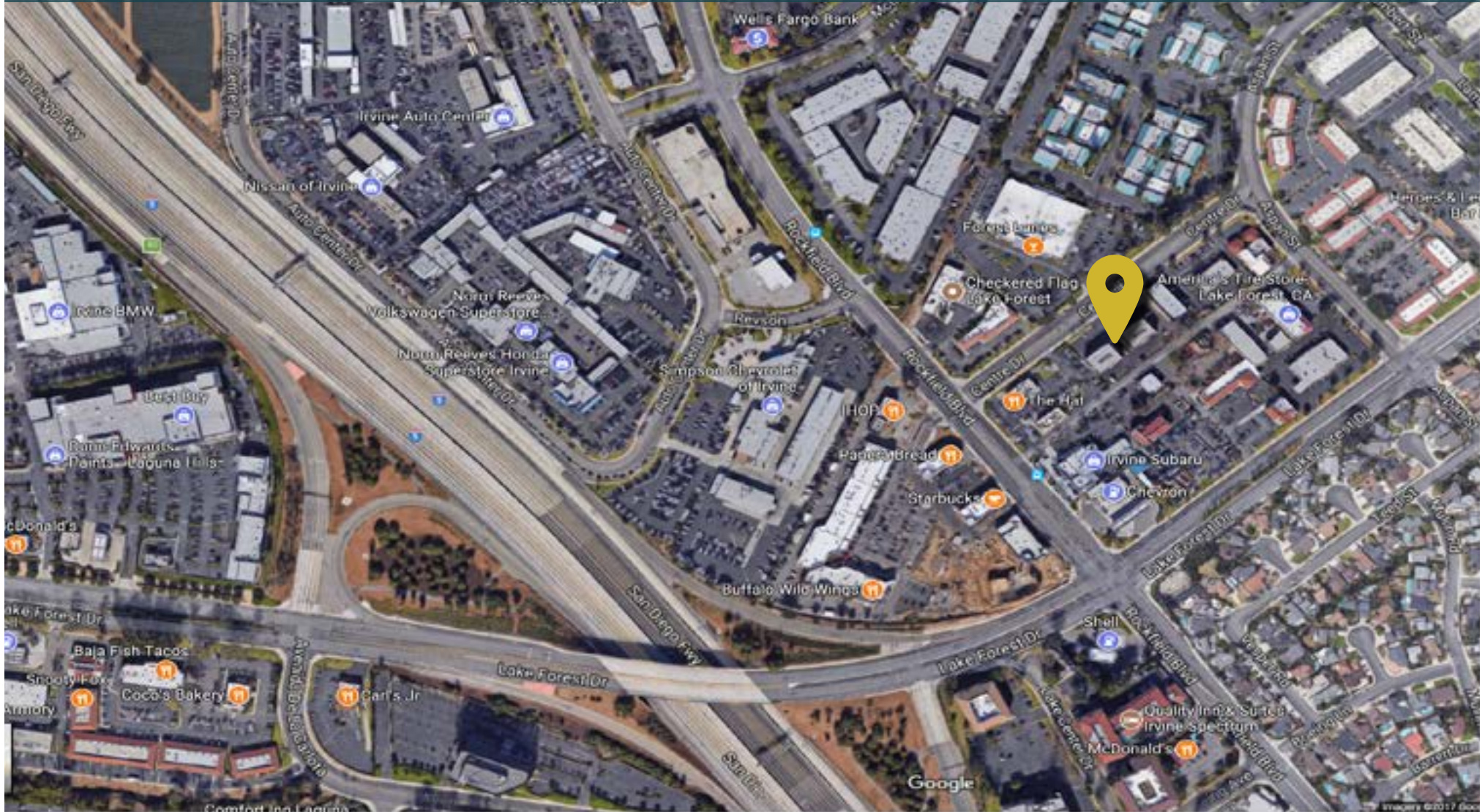
Matt Wickstrom
M: 858-353-6600
P: 949-597-0200

E: matt@tappancorp.com

www.TappanCorp.com

Conveniently located off I-5 in Lake Forest.

Walking distance to restaurants and shopping.



Matt Wickstrom
M: 858-353-6600
P: 949-597-0200

E: matt@tappancorp.com
F: 949-597-0205

www.TappanCorp.com